



---

TECHNOMAR

**GINEVRA**

**KK**  
SUPERYACHTS













































































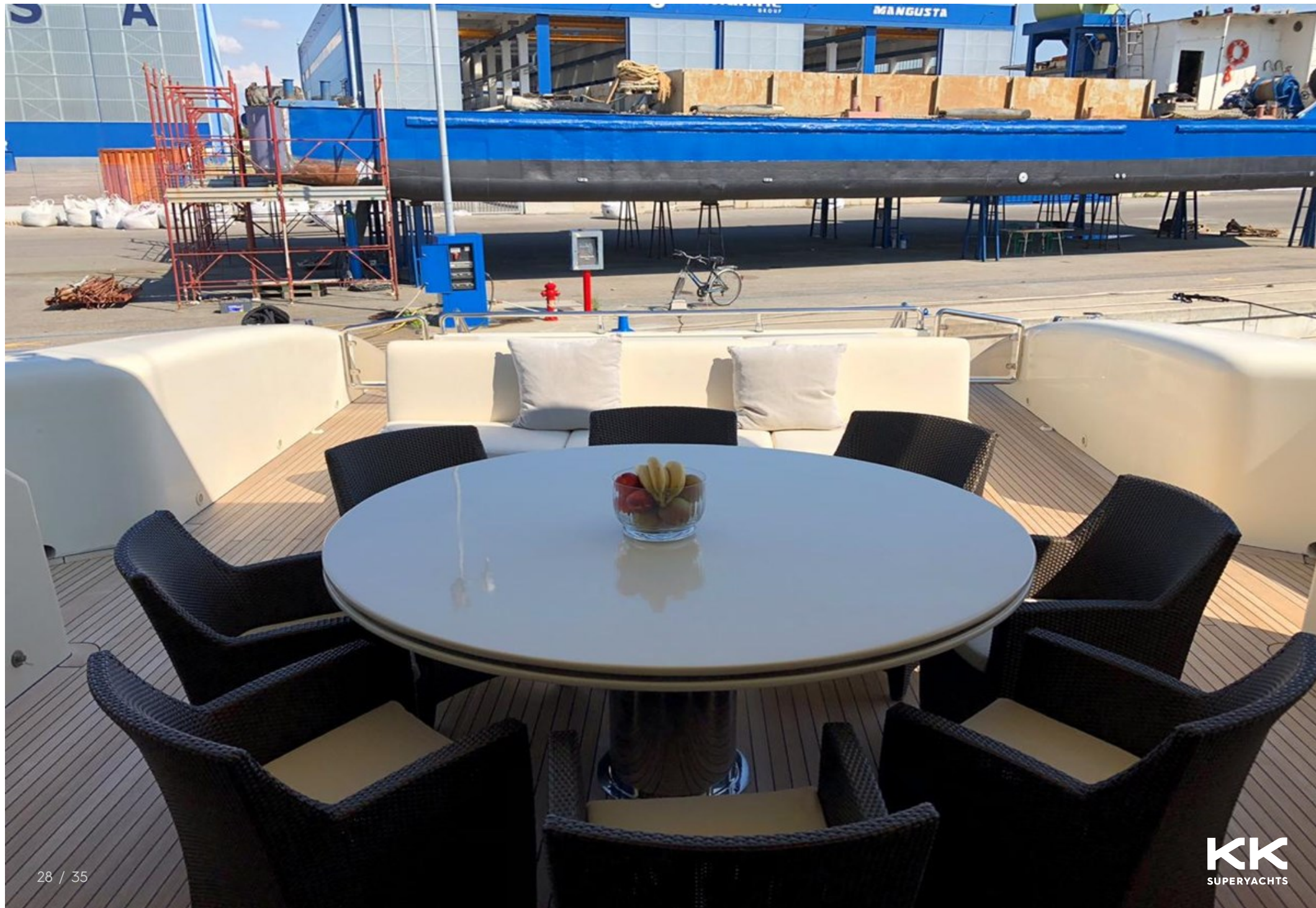
































## MAIN CHARACTERISTICS

|                   |                                 |
|-------------------|---------------------------------|
| LENGTH:           | 116' 11" (35.62m)               |
| BEAM:             | 7.24m / 24ft                    |
| DRAFT:            | 10' 11" (3.32m)                 |
| HULL:             | GRP                             |
| GROSS TONNAGE:    | 177 GT                          |
| MAX SPEED:        | 30 Knots                        |
| CRUISING SPEED:   | 26 Knots                        |
| INTERIOR DESIGNER | Luca Dini Design & Architecture |
| YEAR:             | 2008                            |
| FLAG:             | Italian                         |
| CREW CABINS:      | 5                               |

## ASKING PRICE

€2,400,000 EUR

## GUEST ACCOMMODATION

|         |   |
|---------|---|
| GUESTS: | 8 |
| SLEEPS: | 4 |





4 Quai Antoine 1er,  
98000 Monaco

Tel: +377 97 70 41 22  
[info@kk-superyachts.com](mailto:info@kk-superyachts.com)  
[kk-superyachts.com](http://kk-superyachts.com)